

A photograph of a terraced vineyard in the Alps. The terraces are built on a steep, rocky hillside. The vines are lush green. In the background, a white building with a red roof is visible on the crest of the hill. In the foreground, a stone wall and a metal railing are visible, along with a small white tractor or machine on the vineyard.

Terraced Landscapes of the Alps



Drago Kladnik

Anton Melik Geographical Institute ZRC SAZU

ISCAR Workshop, September 7th, Tolmin, Slovenia

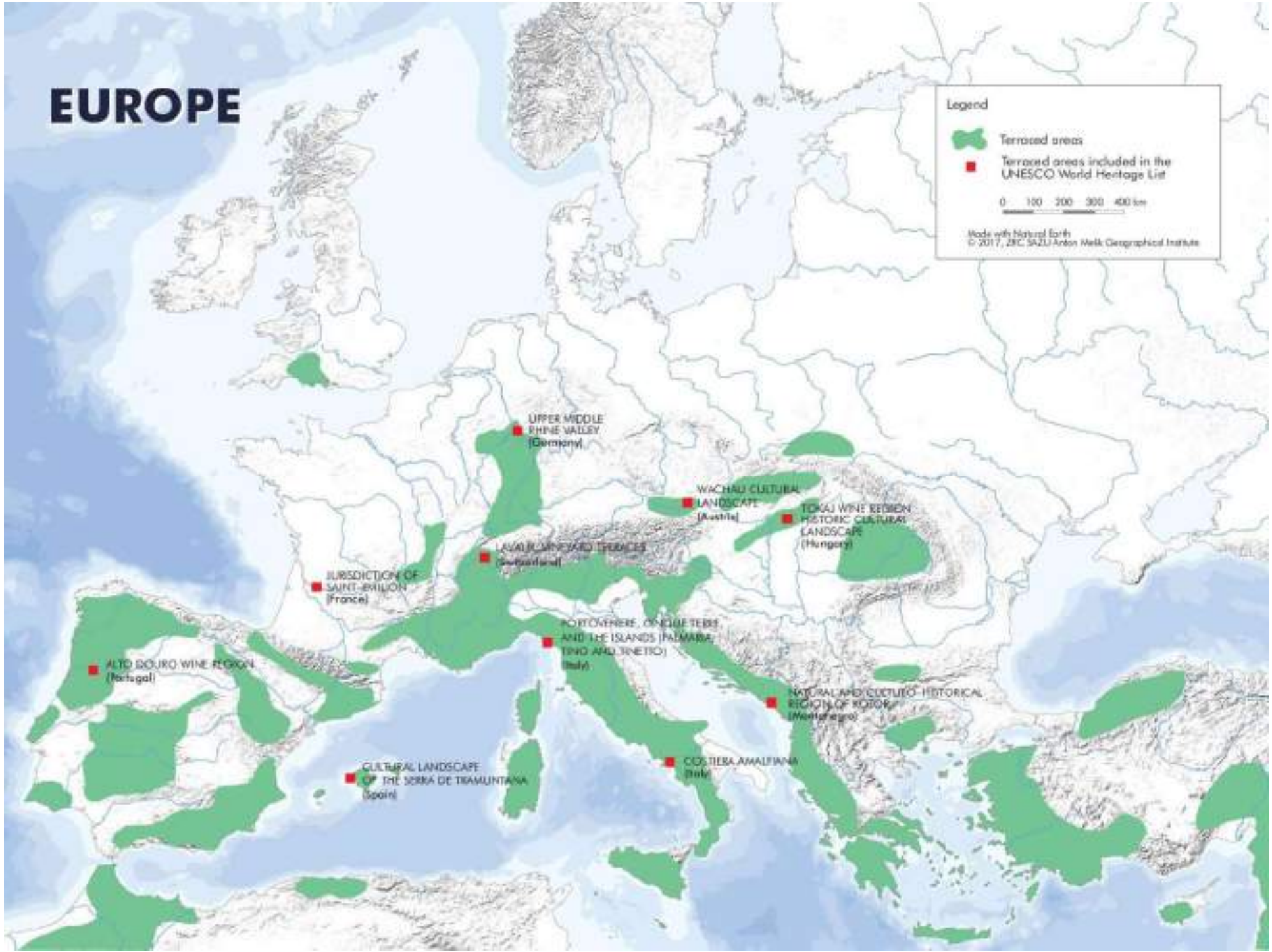
EUROPE

Legend

-  Terraced areas
-  Terraced areas included in the UNESCO World Heritage List

0 100 200 300 400 km

Made with Natural Earth
© 2017, 25C SAZU Arbon Walk Geographical Institute





































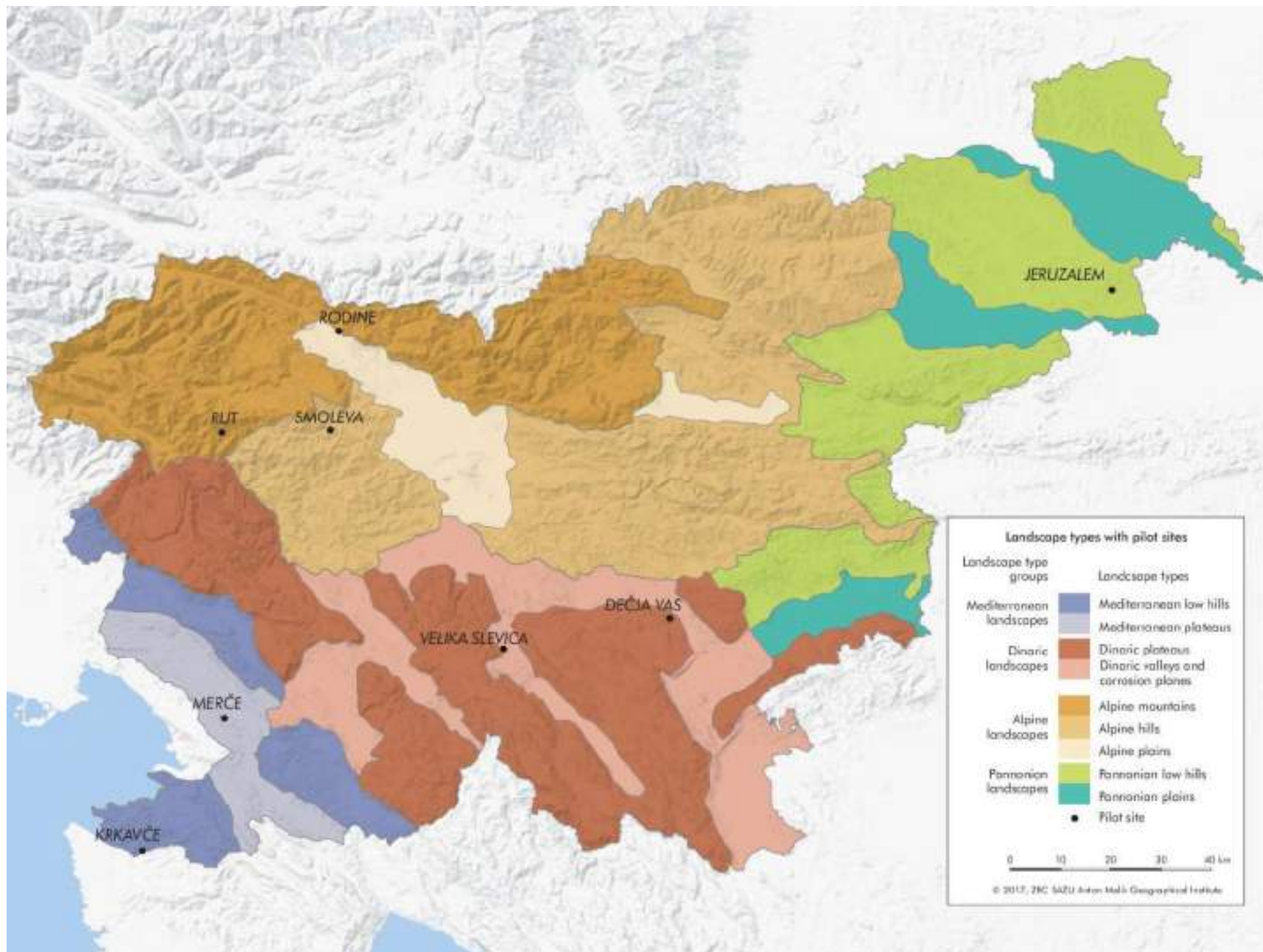


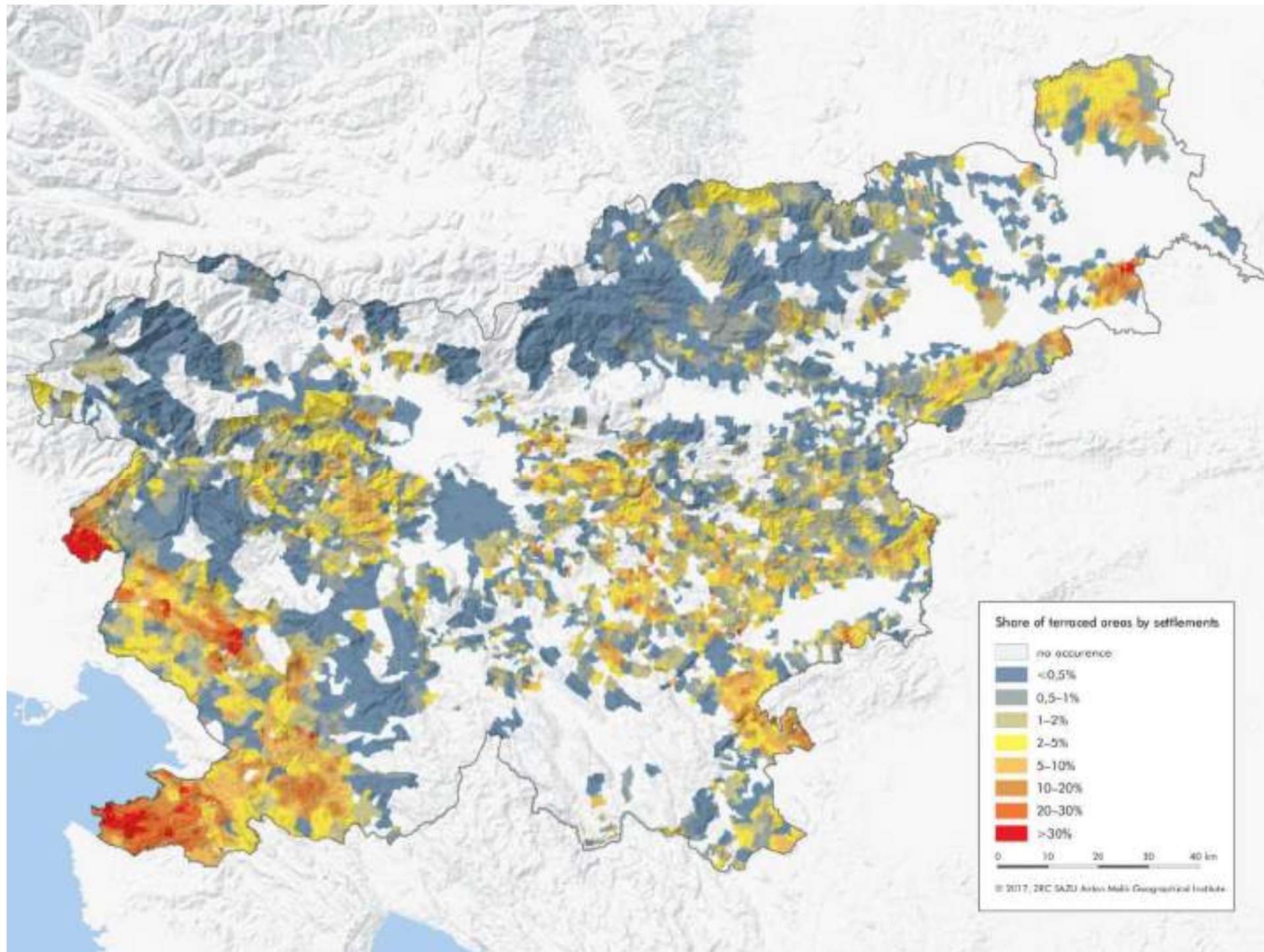


























Raba tal

- njive
- sadovnjaki
- travniki in pašniki
- gozd
- pozidana zemljišča
- drugo
- terasirano območje



Raba tal

- njive
- sadovnjaki
- travniki in pašniki
- neobdelana kmetijska zemljišča
- kmetijska zemljišča v zaraščanju
- gozd
- pozidana zemljišča
- drugo
- terasirano območje

















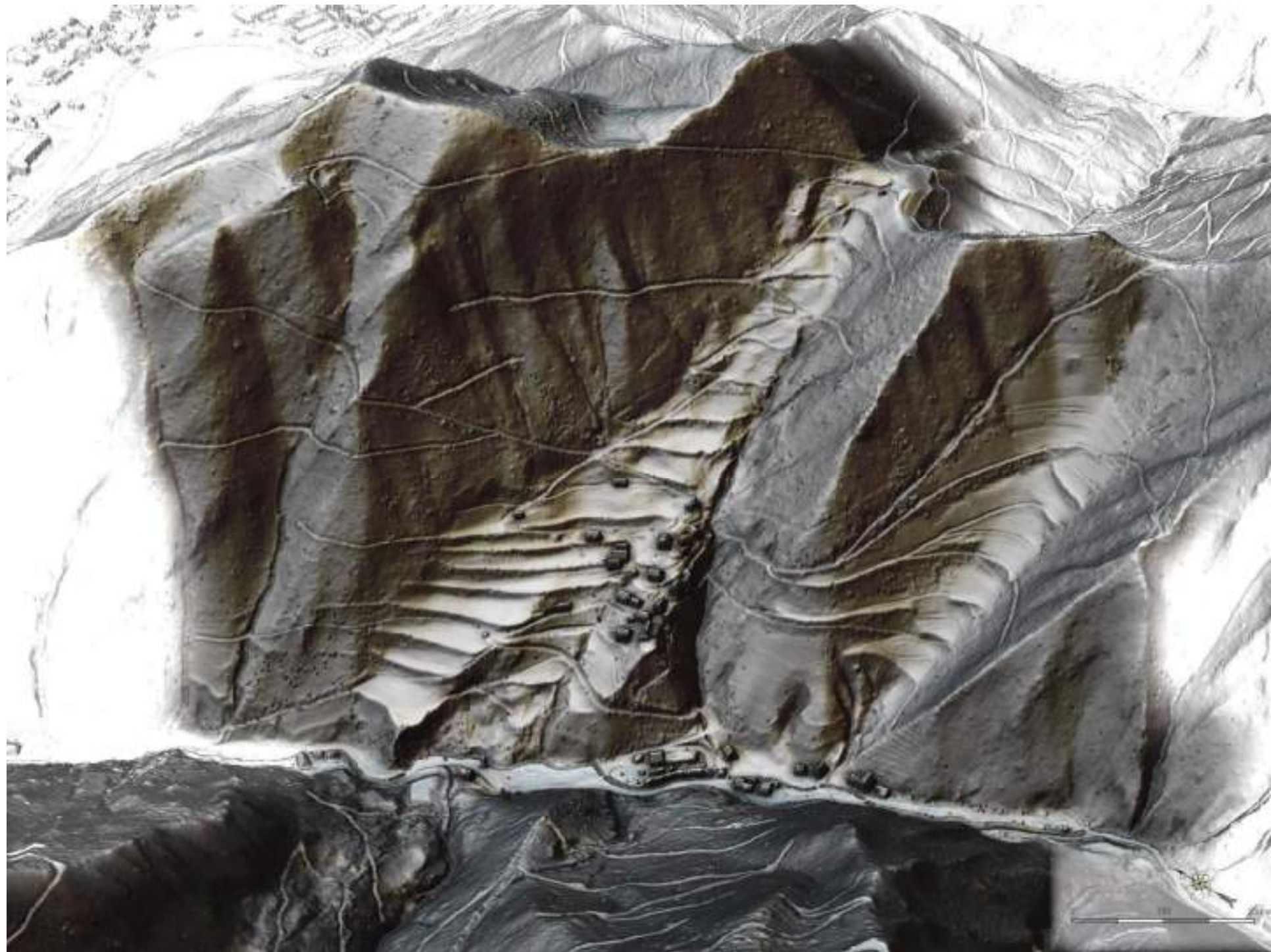








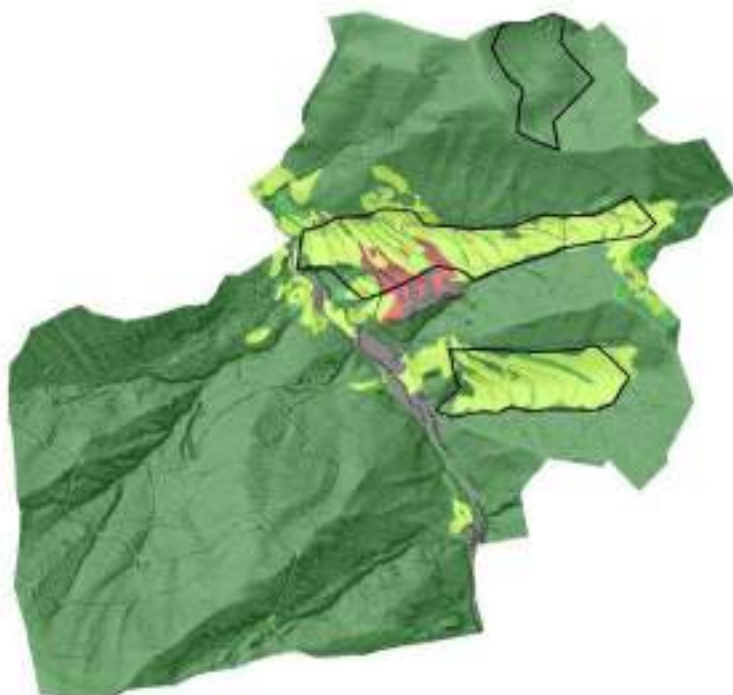






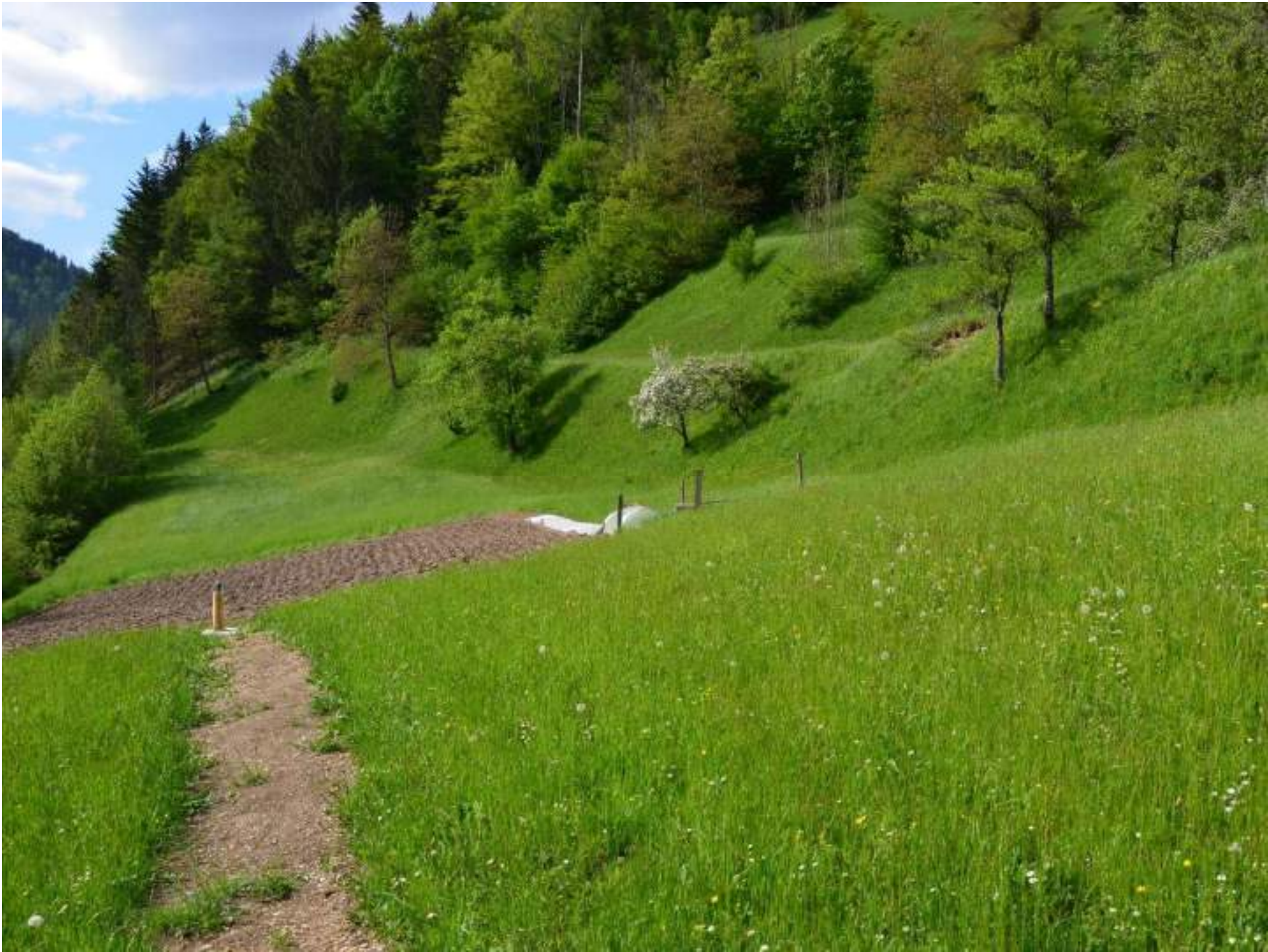
Raba tal

- njive
- sadovnjaki
- travniki in pašniki
- gozd
- pozidana zemljišča
- drugo
- terasirano območje



Raba tal

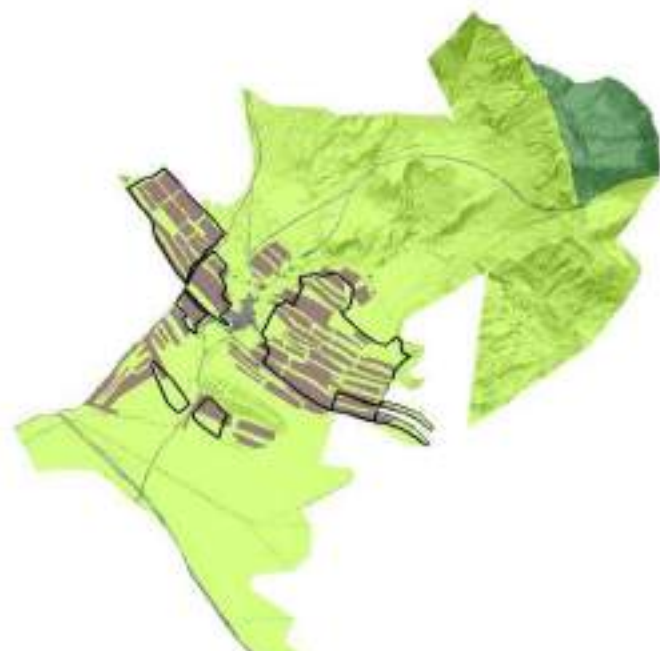
- njive
- sadovnjaki
- travniki in pašniki
- neobdelana kmetijska zemljišča
- kmetijska zemljišča v zaraščanju
- gozd
- pozidana zemljišča
- terasirano območje











Raba tal

- njive
- travniki in pašniki
- gozd
- pozidana zemljišča
- drugo
- terasirano območje



Raba tal

- njive
- sadovnjaki
- travniki in pašniki
- neobdelana kmetijska zemljišča
- kmetijska zemljišča v zaraščanju
- gozd
- pozidana zemljišča
- terasirano območje



